



Promoting Public Health Measures in Response to COVID-19 on Fishing Vessels

**An awareness level training for
Pacific Islands Regional Fisheries Observers**

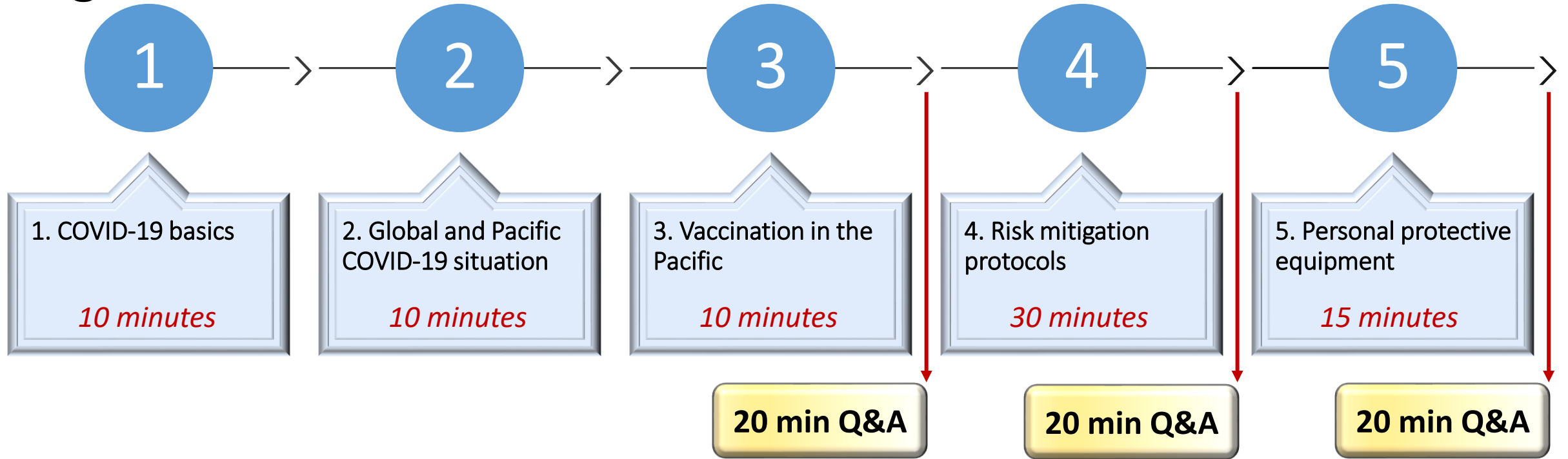
20 July 2021

Onofre Edwin A. Merilles Jr. (*Jojo*)

Epidemiologist – Project Coordinator

Email : JojoM@spc.int | Web : www.spc.int

Agenda



Meet your facilitators



Jojo Merilles
Epidemiologist
JojoM@spc.int



Shakti Gounder
Surveillance &
Research Officer
ShaktiG@spc.int



Sala Saketa
Epidemiologist
SalanietaS@spc.int



Sonny Magboo
Epidemiologist
FloranteM@spc.int



Louise Fonua
Epidemiologist
LouiseF@spc.int



Margaret Leong
Infection Prevention
and Control Adviser
MargaretL@spc.int



This presentation and this session by itself *is not sufficient* training for Observers who have potential for occupational exposure to the SARS-CoV-2 virus.

Observers must be trained on specific policies and procedures, and must include *practice* in putting on and taking off PPEs and performing decontamination procedures until competency and confidence can be demonstrated.

Training outcome

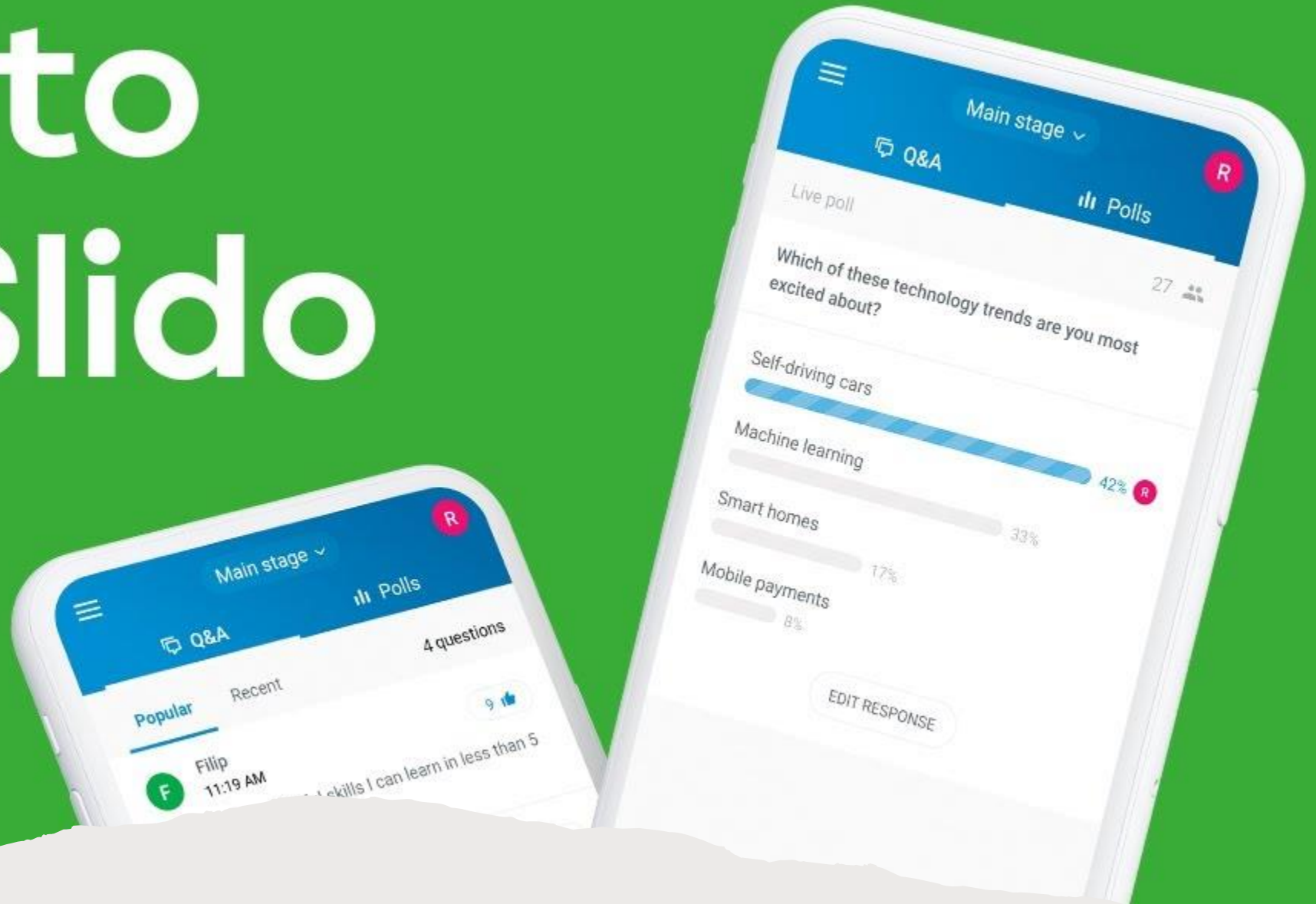
At the end of the session, participants will be able to:

1. Understand the basics of COVID-19 in a rapidly changing environment
2. Describe the public health measures that may protect seafarers/observers throughout their journey
3. Prevent and manage an outbreak of COVID-19 disease on board a fishing vessel

KNOWLEDGE	SKILLS
COVID-19: commonly reported symptoms	Proper identification of cases
Case and death distribution, and vaccination rollout	Enhancement of situational awareness
Risk mitigation protocols Personal protective equipment	Personal safety and maintaining supportive environment

How to Use Slido

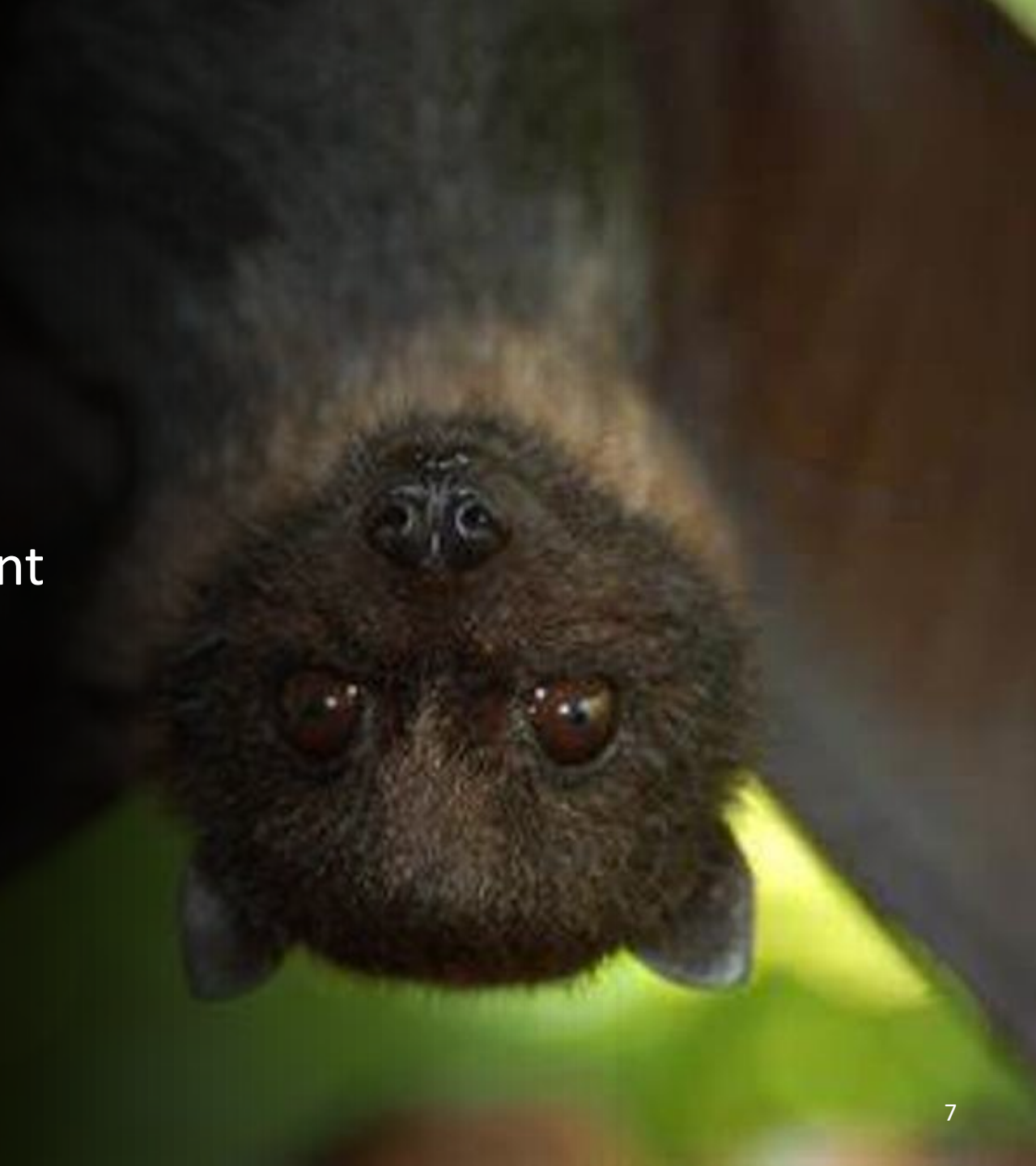
slido



COVID-19 Basics

SARS-CoV-2

- **Natural reservoir:** Person, animal, environment where an infectious agent normally lives. It's natural habitat
- Usually reservoir not harmed by the infectious agent but can transfer the agent to others
- SARS (2002), MERS (2012)



From reservoir to host

- SARS: 2002 – Bat reservoir, intermediate host Civet cat
 - MERS: 2012 – Bat reservoir, intermediate host Camel
 - COVID-19: 2019 – Bat reservoir, intermediate host ?
Pangolin ?
-



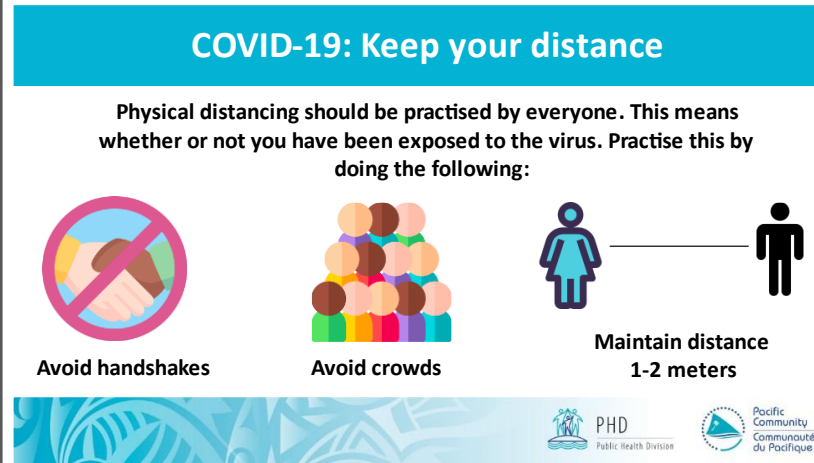


Mode of Transmission

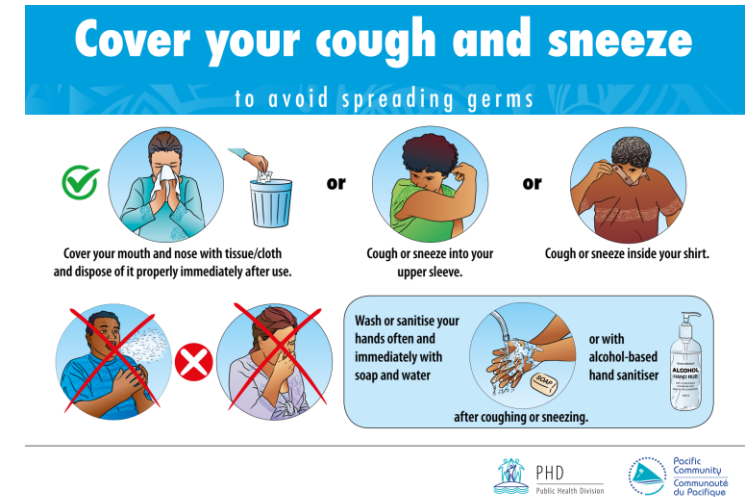
- **Droplet:** Sneezing, coughing, talking.
 - Droplets spray a few feet (1 meter) and fall to the ground
- **Fomites:** Surfaces



Good hand hygiene



Physical distancing



Proper cough etiquette

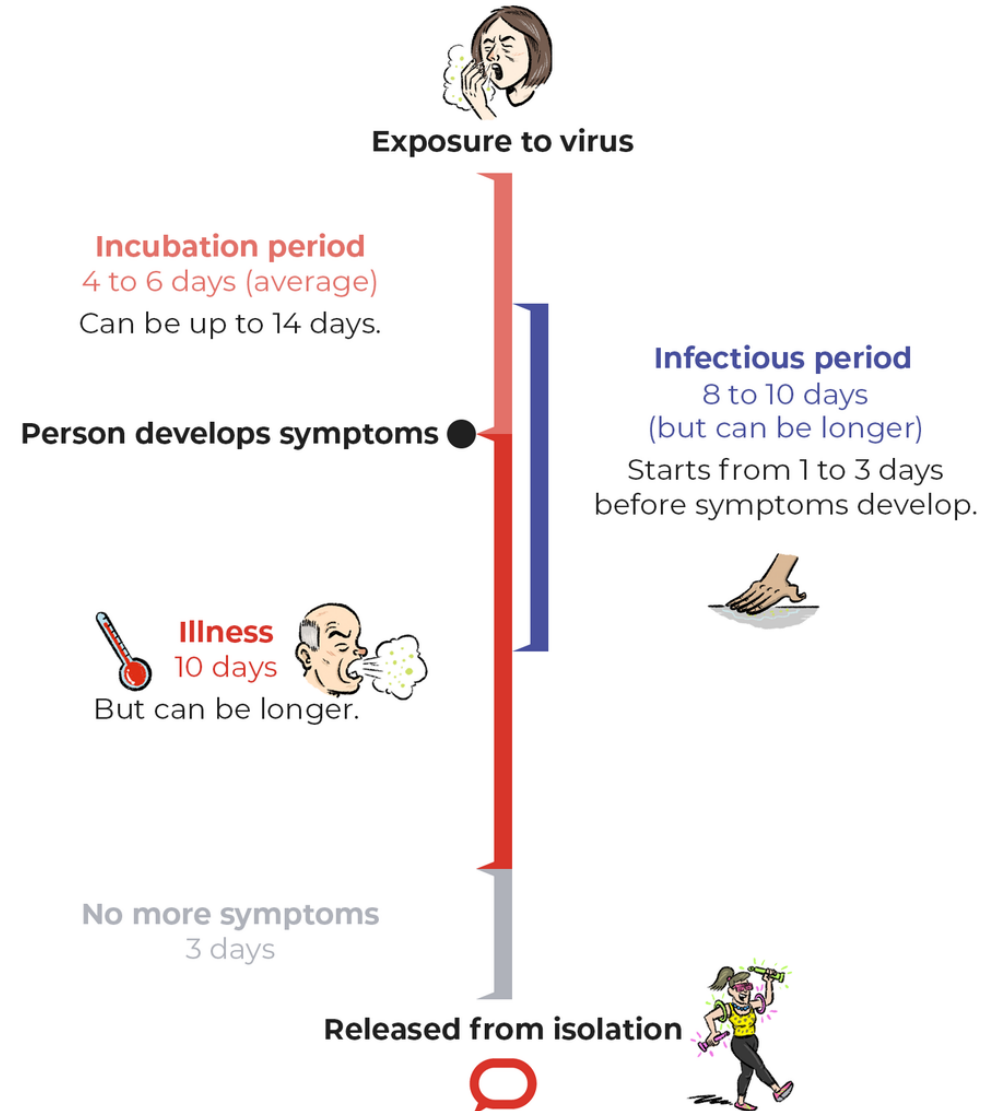
Cornerstones of Prevention



Key Definitions

- **Incubation Period:** period from exposure to onset of illness
- **Infectious Period:** period where it is possible to transmit the virus to others

Coronavirus progression in majority of cases



What are the most common symptoms of COVID-19



Cough



Fever



Shortness of breath



Sore throat



Headache



Runny nose



Tiredness



Muscle pain



Diarrhoea



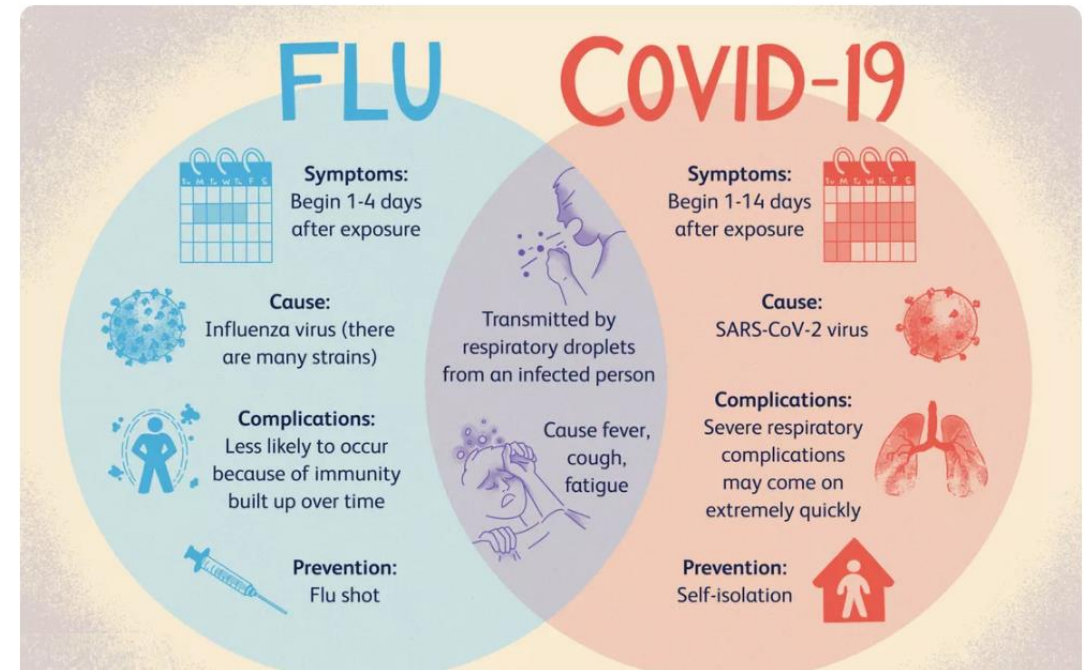
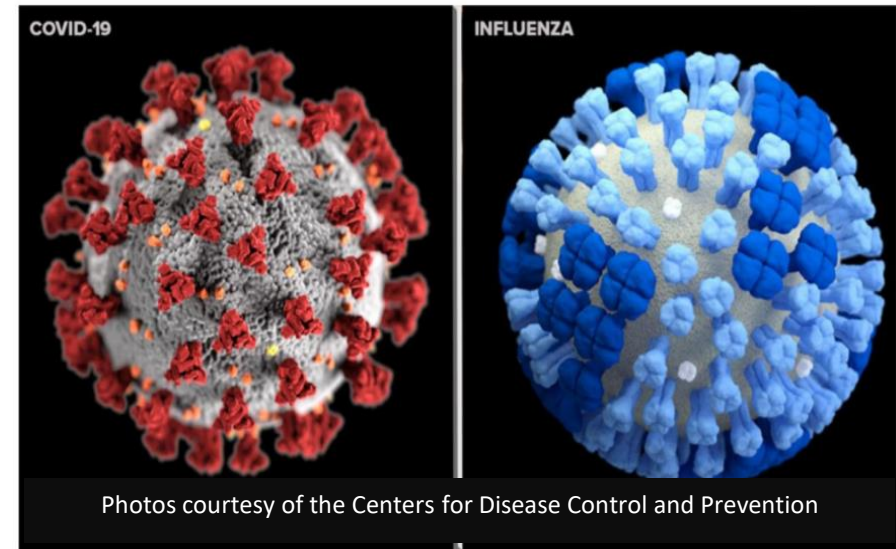
Loss of smell



Loss of taste

COVID-19 Quick Guide

- Main symptoms: fever and cough, shortness of breath
 - Maybe: headache, sore throat, general feeling of being unwell (myalgia or fatigue), diarrhea not uncommon
- Infectious period: contagious at symptom onset and likely shortly before (1-3 days before symptoms develop). Asymptomatic infections occur – may be presumed contagious
- Incubation: the average incubation period may be 3 - 5 days (range 1-14 days)
- Treatment: There is no specific recommended treatment for COVID-19





Thank you!

Onofre Edwin A. Merilles Jr. (Jojo)

Epidemiologist – Project Coordinator

Team Leader – Surveillance, Preparedness and Response Programme

Email: JojoM@spc.int | Web: www.spc.int