



Pacific  
Community  
Communauté  
du Pacifique



**PIRFO**

***Whales, dolphins and sea birds ID cards***  
*for Pacific Islands Regional Fisheries Observers*

Prepared by the Pacific Community  
Noumea, New Caledonia, 2016

These identification cards are produced by the Pacific Community (SPC) to help with the identification of species of special interest (protected species) encountered by Fisheries Observers while onboard commercial tuna boats that fish in the western and central Pacific Ocean (WCPO). The species included in these cards are the ones commonly recorded by observers on tuna vessels operating in the WCPO. The cards can be easily accessed by observers while working on deck during fishing operations to verify and correctly identify species. The cards also assist in training observers operating within the Western and Central Pacific Fisheries Commission Convention Area.

**Printing of these cards was made possible through financial assistance provided by the Japan Trust Fund.**

This project was coordinated by SPC's Oceanic Fisheries Programme Fisheries Monitoring Section and Fisheries Information Section. Colour illustrations by Hazel Adams (p. 4-8), Youngmi Choi (p. 11-38); black and white illustrations courtesy of the Food and Agriculture Organization of the United Nations (FAO).

This publication is based on the *Marine species identification manual for horizontal longline fishermen* by Chapman et al. (2006). First published – 2006. Original text: English

#### Pacific Community Cataloguing-in-publication data

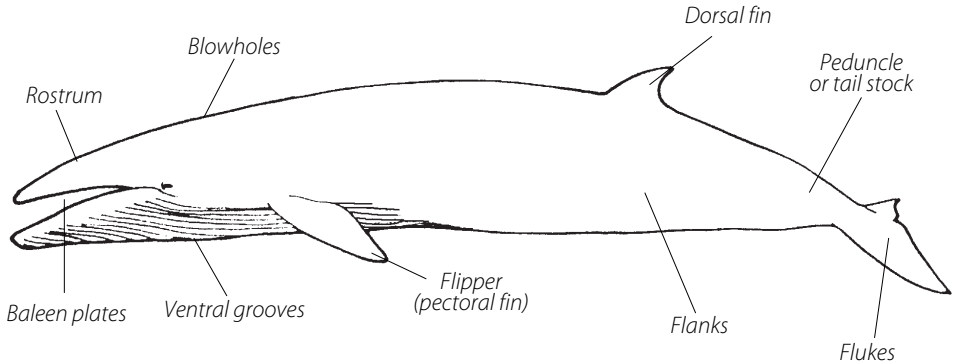
Pacific Islands Regional Fisheries Observers (PIRFO): Whales, dolphins and sea birds ID cards for Pacific Islands Regional Fisheries Observers / prepared by the Pacific Community

1. Marine fishes – Identification – Oceania.
2. Marine fishes – Classification – Oceania.
3. Marine mammals – Identification – Oceania.
4. Fishery management – Oceania.
5. Fishes – Identification – Oceania.

I. Title II. Pacific Community  
597.0995  
ISBN: 978-982-00-0994-3

AACR2

# Baleen whales



# Blue whale

*Balaenoptera musculus*

*Small dorsal fin located far back on the body*



*Body blue/grey mottled colouration*

**BLW**

*Maximum length: 30 m*

# Fin whale

*Balaenoptera physalus*



Single median ridge  
on the rostrum



FIW

Maximum length: 24 m

White lower right jaw

# Sei whale

*Balaenoptera borealis*

Large falcate dorsal fin



Single distinct ridge  
on the rostrum

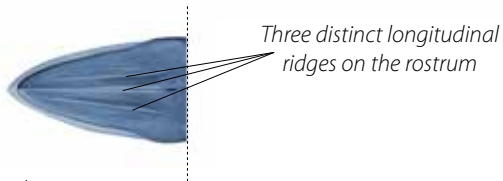


SIW

Maximum length: 18 m

# Bryde's whale

*Balaenoptera edeni*



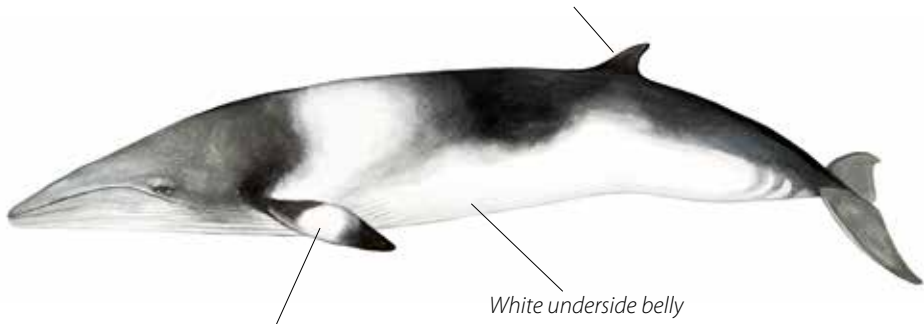
BRW

Maximum length: 15 m

# Minke whale

*Balaenoptera acutorostrata*

Dorsal fin is tall and falcate



White patch on each flipper

White underside belly

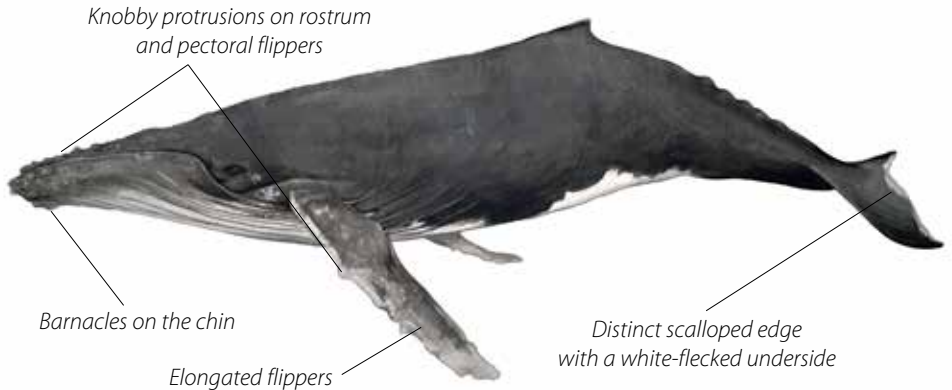
MIW

Maximum length: 9 m



# Humpback whale

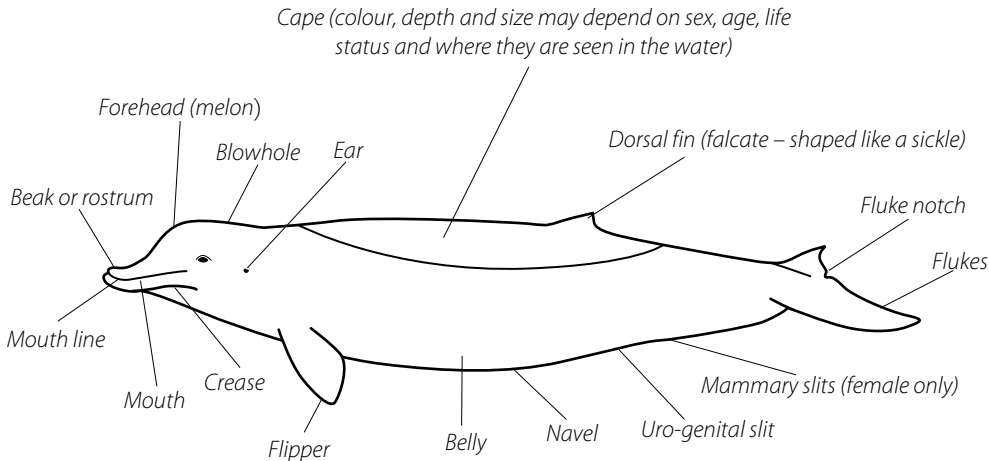
*Megaptera novaeangliae*



HUW

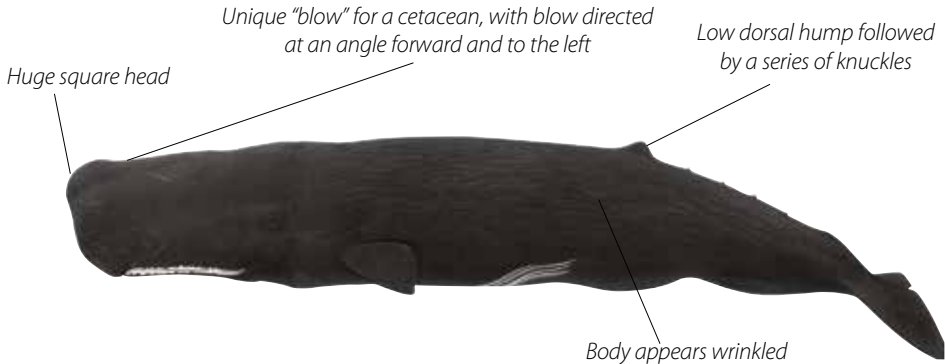
Maximum length: 16 m

# Toothed whales



# Sperm whale

*Physeter macrocephalus*



SPW

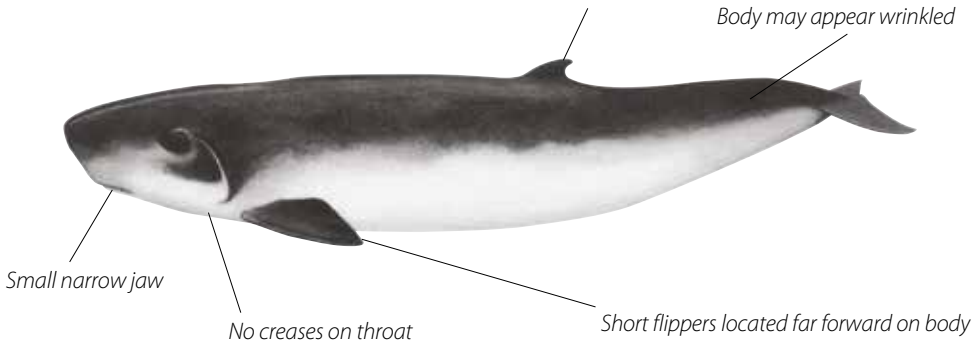
Maximum length: 18 m

# Pygmy sperm whale

*Kogia breviceps*

*Dorsal fin tiny, located after mid-back*

*Body may appear wrinkled*



*Small narrow jaw*

*No creases on throat*

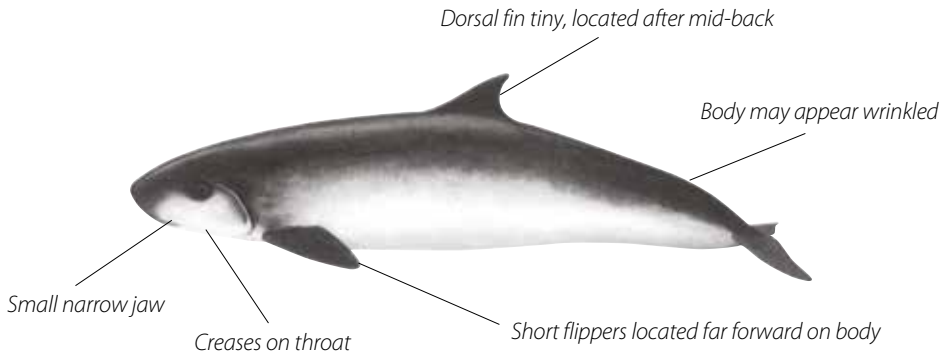
*Short flippers located far forward on body*

**PYW**

*Maximum length: 3.7 m*

# *Dwarf sperm whale*

*Kogia simus*

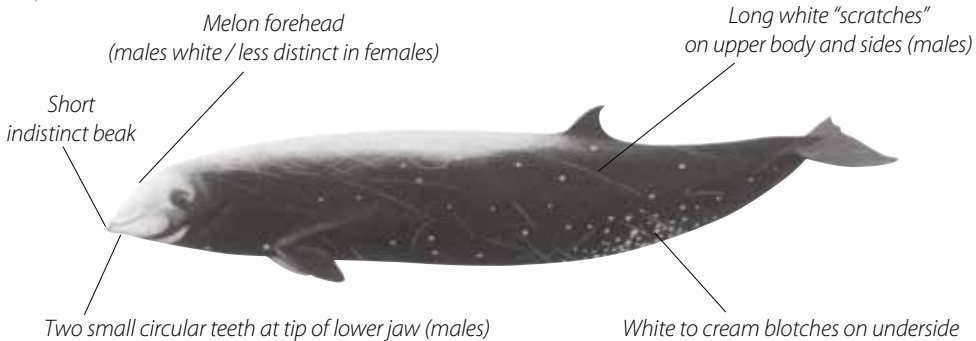


**DWW**

*Maximum length: 2.7 m*

# Cuvier's beaked whale

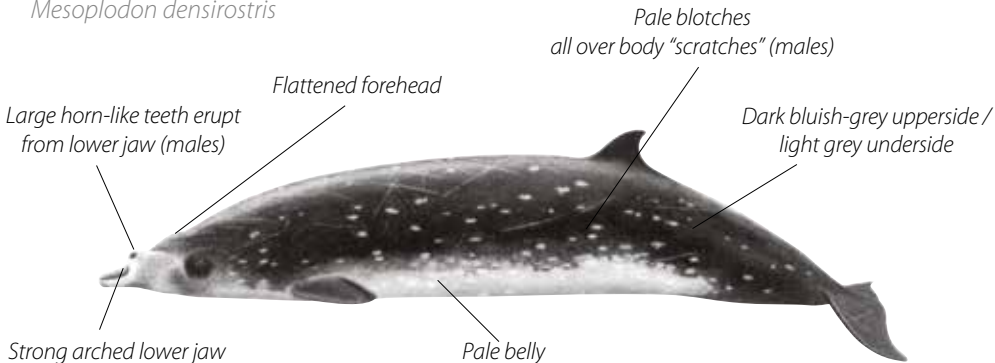
*Ziphius cavirostris*



Maximum length: 7 m

# Blainville's beaked whale

*Mesoplodon densirostris*



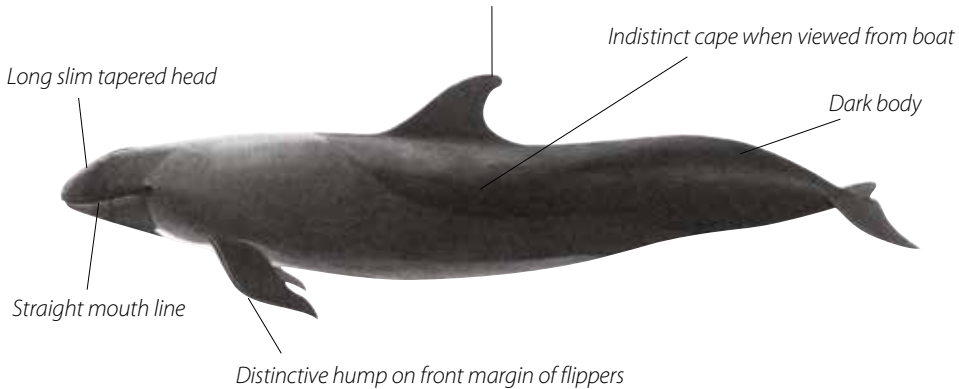
BBW

Maximum length: 5 m

# False killer whale

*Pseudorca crassidens*

Dorsal fin with pointed tip, located mid-back

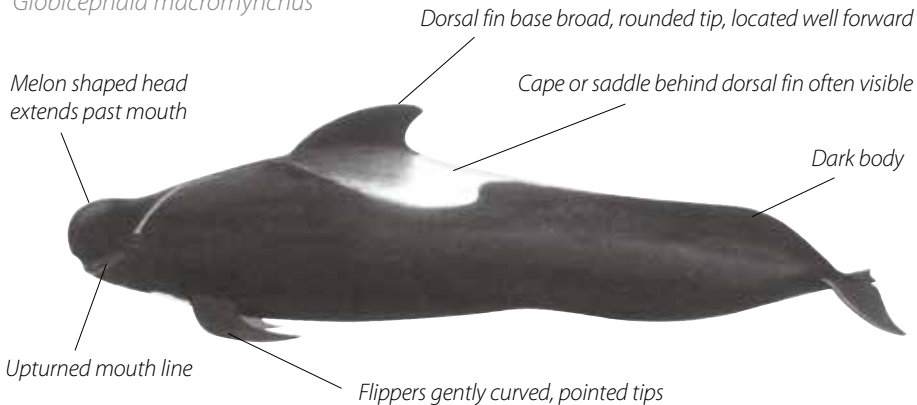


Maximum length: 6 m



# Short finned pilot whales

*Globicephala macrorhynchus*

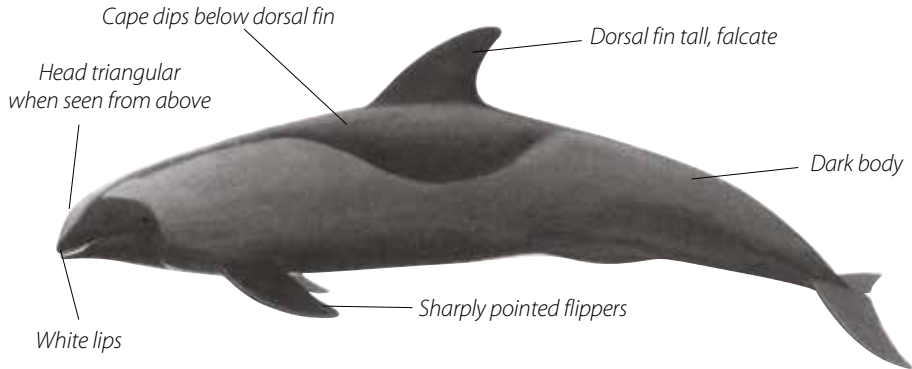


SHW

Maximum length: 6 m

# Melon-headed whale

*Peponocephala electra*

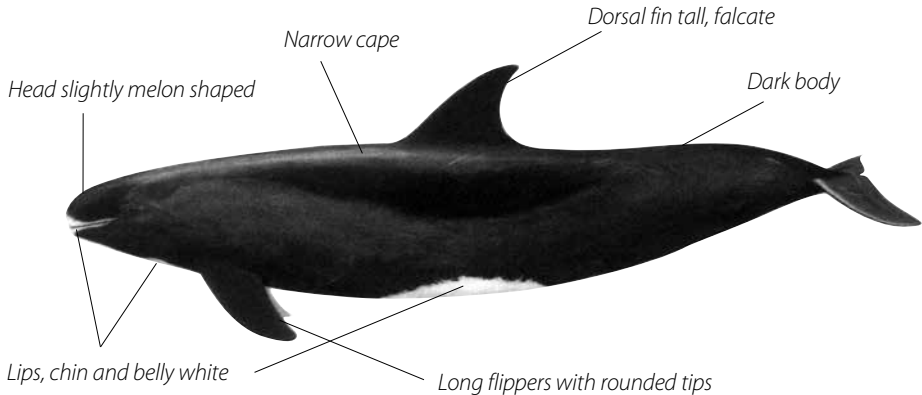


MEW

Maximum length: 2.7 m

# Pygmy killer whale

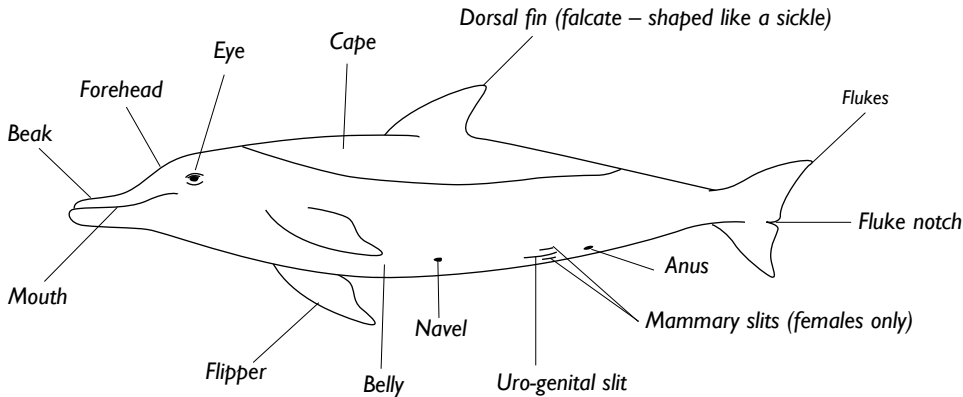
*Feresa attenuata*



KPW

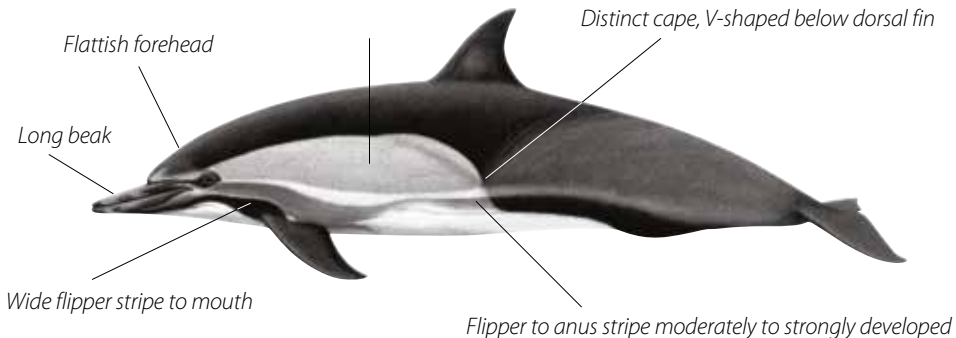
Maximum length: 3 m

# Dolphins



# Long beaked common dolphin

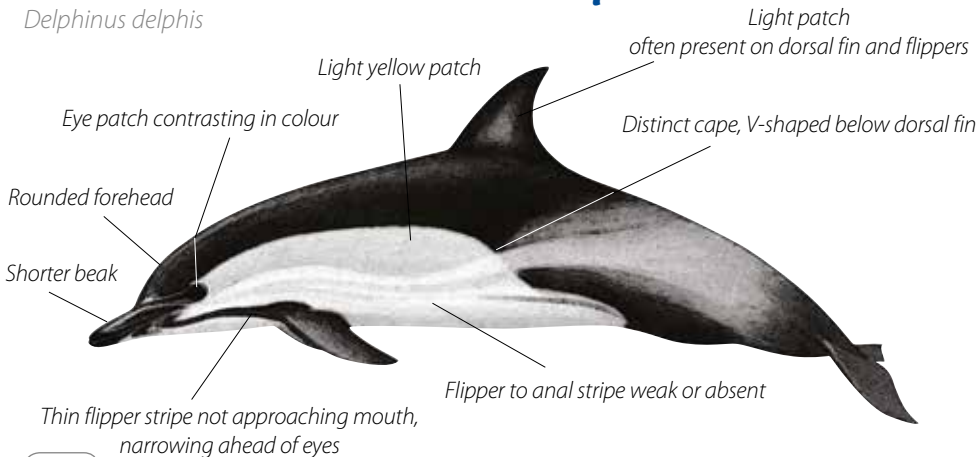
*Delphinus capensis*



Maximum length: 2.4 m

# Short beaked common dolphin

*Delphinus delphis*

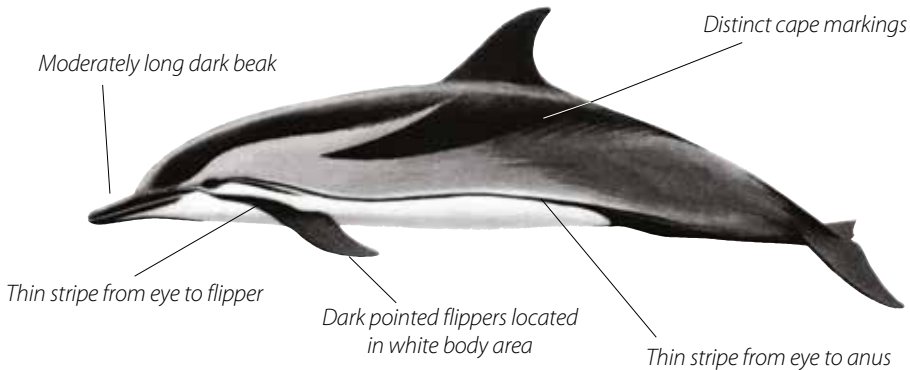


DCO

Maximum length: 2 m

# Striped dolphin

*Stenella coeruleoalba*

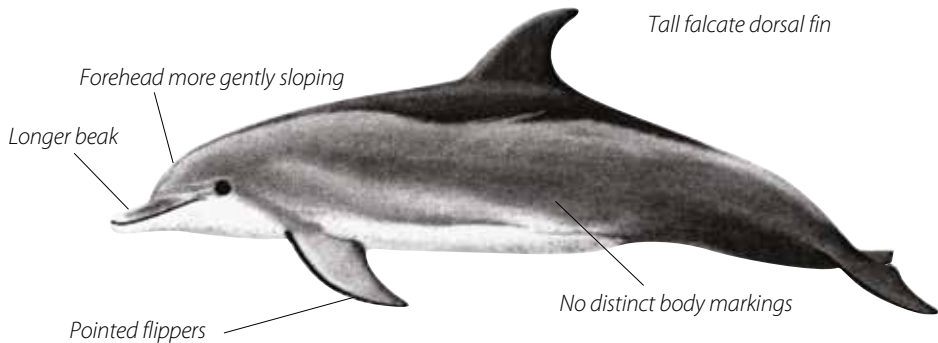


DST

Maximum length: 2.6 m

# *Indo-Pacific bottle nose dolphin*

*Tursiops aduncus*



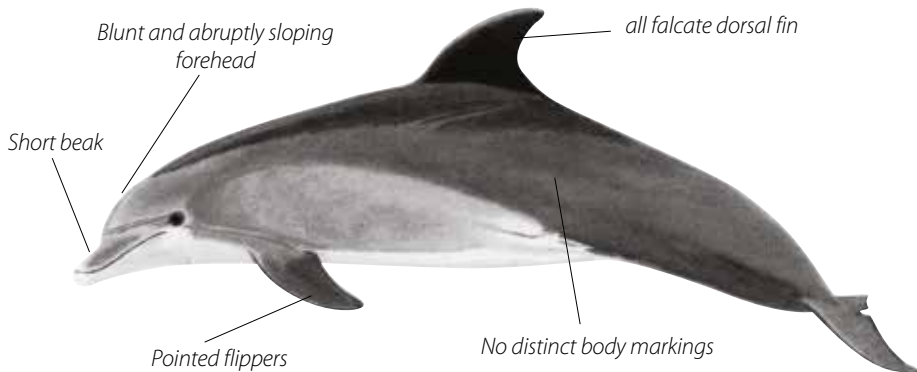
DBZ

Maximum length: 2.7 m



# Common bottle-nose dolphin

*Tursiops truncatus*

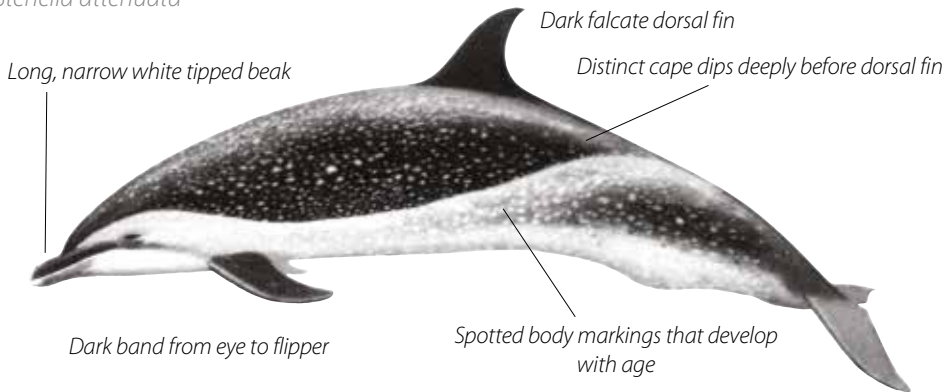


DBO

Maximum length: 3.8 m

# *Pantropical spotted dolphin*

*Stenella attenuata*

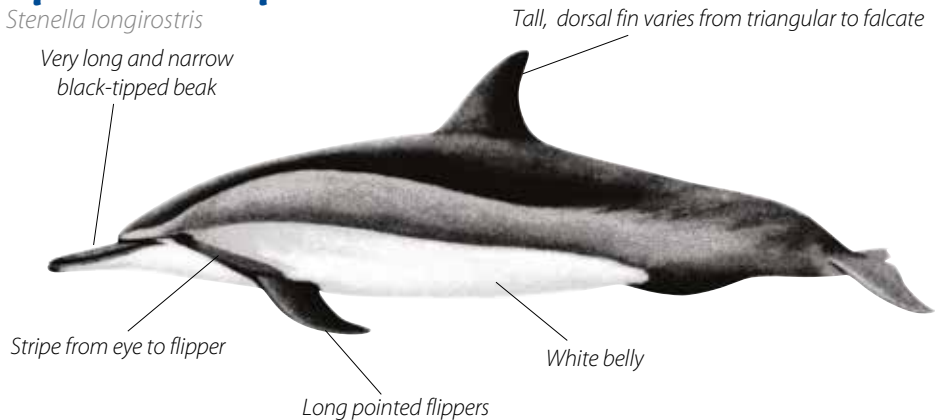


DPN

Maximum length: 2.6 m

# Spinner dolphin

*Stenella longirostris*

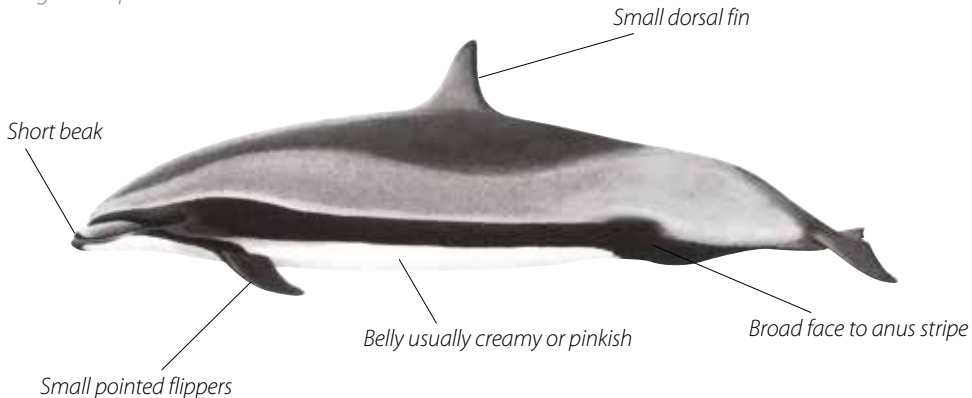


DSI

Maximum length: 2.1 m

# Fraser's dolphin

*Lagenodelphis hosei*

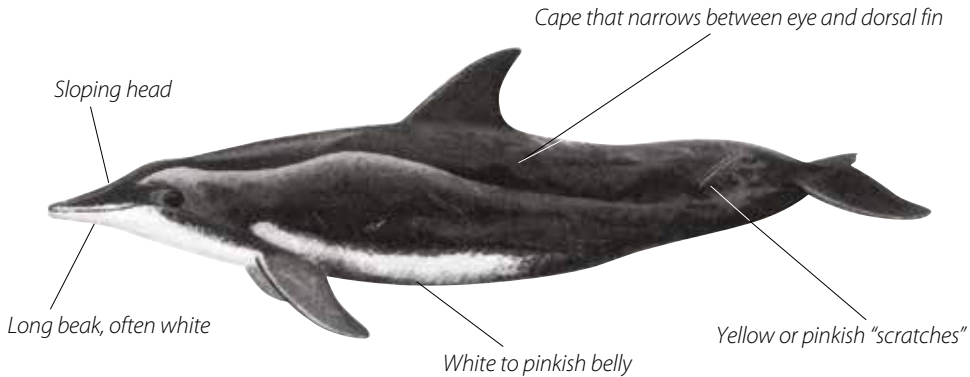


FDR

Maximum length: 2.7 m

# Rough-toothed dolphin

*Steno bredanensis*

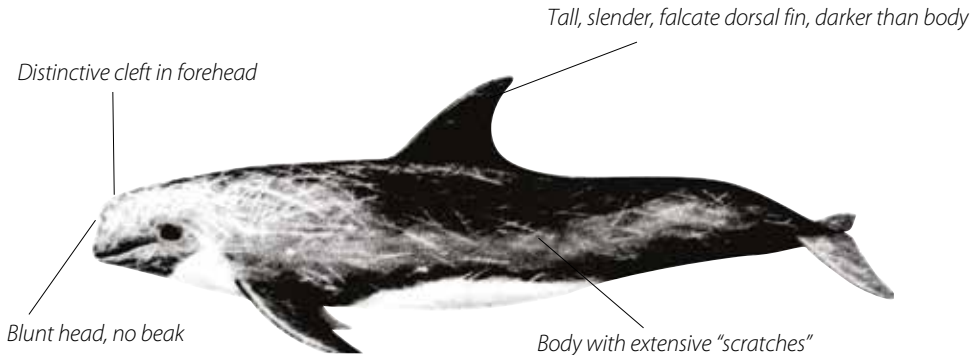


RTD

Maximum length: 2.8 m

# Risso's dolphin

*Grampus griseus*



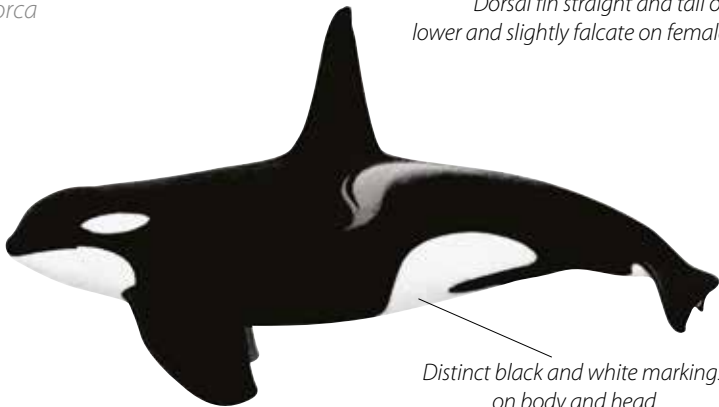
DRR

Maximum length: 4 m

# Killer whale

*Orcinus orca*

*Dorsal fin straight and tall on males,  
lower and slightly falcate on females and juveniles*

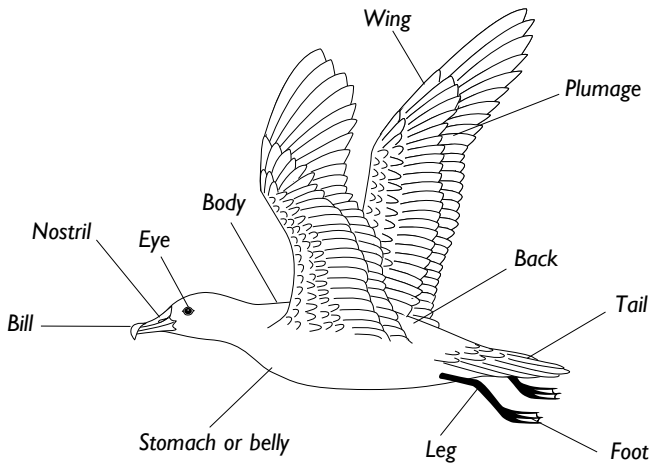


*Distinct black and white markings  
on body and head*

KIW

*Maximum length: 9 m*

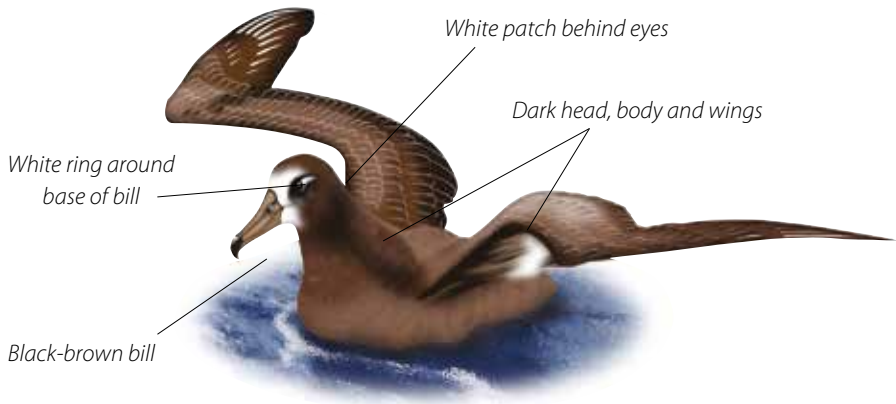
# Sea birds





# *Black-footed albatross*

*Diomedea nigripes*



DKN

*Northern hemisphere distribution*

# Laysan albatross

*Diomedea immutabilis*



DIZ

*Northern hemisphere distribution*

# Albatrosses

Diomedidae

Species in this family have:

- Large hooked bill
- Large birds
- Wing span up to 3.5 m
- External nostrils at base of bill, one on each side



ALZ

# Boobies and gannets

Sulidae



Species in this family have:

- Large birds
- Long wings with wing span up to 2.2 m
- Wedge-shaped tail
- Stout conical bill

# Petrels and shearwaters

Procellariidae

Species in this family have:

- Most birds smaller in size (wing span up to 1.5 m, but mainly less than 1 m) except for giant petrel (wing span up to 2.5 m)
- Nostrils united in a single tube on top of bill



PRX

# Gulls, terns and skuas

Laridae

Species in this family have:

- Generally smaller birds (wing span up to 1 m), with skuas larger (wing span up to 1.8 m)
- Nostrils are plain openings on either side of bill
- Most birds have grey and white plumage, some with black on head and wings



LRD

## ***Index***

Albatrosses	33	Fraser's dolphin	26	<i>Pseudorca crassidens</i>	14
<i>Balaenoptera acutorostrata</i>	6	Gannets	34	Pygmy killer whale	17
<i>Balaenoptera borealis</i>	4	<i>Globicephala macrorhynchus</i>	15	Pygmy sperm whale	10
<i>Balaenoptera edeni</i>	5	<i>Grampus griseus</i>	28	Risso's dolphin	28
<i>Balaenoptera musculus</i>	2	Gulls	36	Rough-toothed dolphin	27
<i>Balaenoptera physalus</i>	3	Humpback whale	7	Sei whale	4
Black-footed albatross	31	Indo-Pacific bottle nose dolphin	22	Shearwaters	35
Blainville's beaked whale	13	Killer whale	29	Short beaked common dolphin	20
Blue whale	2	<i>Kogia breviceps</i>	10	Short finned pilot whales	15
Boobies	34	<i>Kogia simus</i>	11	Skuas	36
Bryde's whale	5	<i>Lagenodelphis hosei</i>	26	Sperm whale	9
Common bottle-nose dolphin	23	Laysan albatross	32	Spinner dolphin	25
Cuvier's beaked whale	12	Laridae	36	<i>Stenella attenuata</i>	24
<i>Delphinus capensis</i>	19	Long beaked common dolphin	19	<i>Stenella coeruleoalba</i>	21
<i>Delphinus delphis</i>	20	Melon-headed whale	16	<i>Stenella longirostris</i>	25
<i>Diomedea immutabilis</i>	32	<i>Megaptera novaeangliae</i>	7	<i>Steno bredanensis</i>	27
<i>Diomedea nigripes</i>	31	<i>Mesoplodon densirostris</i>	13	Striped Dolphin	21
Diomedeidae	33	Minke whale	6	Sulidae	34
Dwarf sperm whale	11	<i>Orcinus orca</i>	29	Terns	36
False killer whale	14	Pantropical spotted dolphin	24	<i>Tursiops aduncus</i>	22
<i>Feresa attenuata</i>	17	<i>Peponocephala electra</i>	16	<i>Tursiops truncatus</i>	23
Fin whale	3	Petrels	35	<i>Ziphius cavirostris</i>	12
		<i>Physeter macrocephalus</i>	9		
		Procellariidae	35		

Pacific  
Community  
Communauté  
du Pacifique



**PACIFIC COMMUNITY**

BP D5 • 98848 NOUMEA CEDEX • NEW CALEDONIA

Telephone: +687 26 20 00

Facsimile: +687 26 38 18

Email: [spc@spc.int](mailto:spc@spc.int)

<http://www.spc.int/>

Funding provided by the Japan Trust Fund of the Western and Central Pacific Fisheries Commission  
Prepared for publication at the Pacific Community headquarters, Noumea, New Caledonia, 2016  
and printed in Australia by Norwood Industries Pty Ltd.

