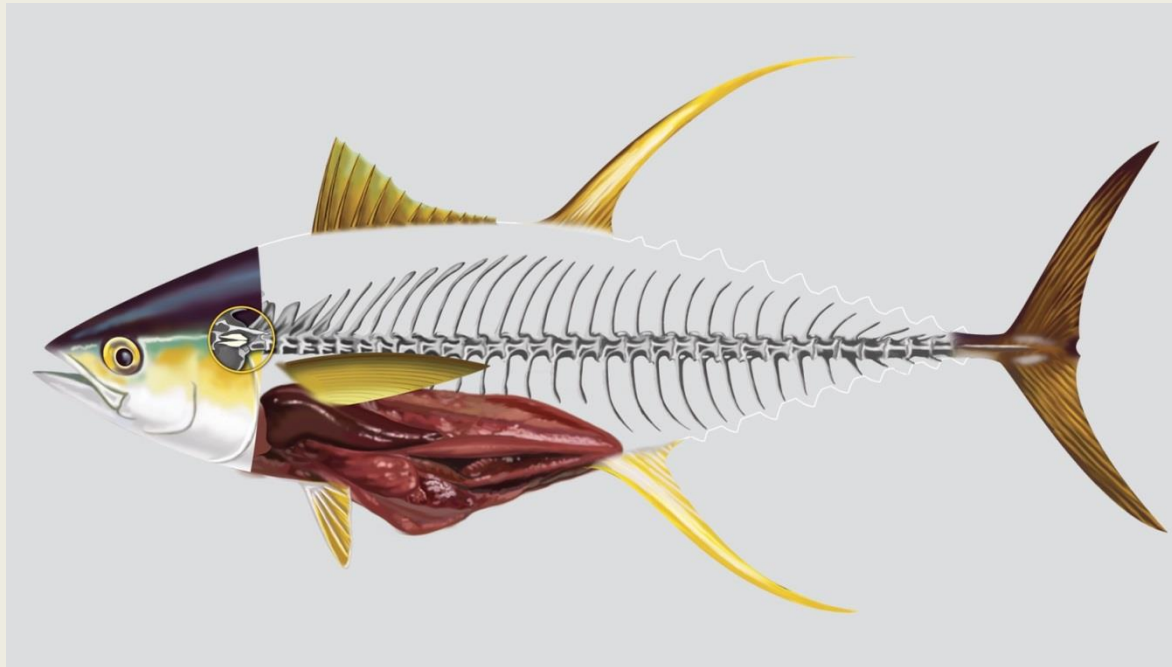


Biological Sampling

Procedures/ instructions



BEFORE A TRIP

- Speak with coordinator to plan sampling
- Check your sampling equipment is OK
- Make sure the fishing company and the vessel are aware of your sampling
- Inspect freezer facilities where samples can be stored – stop sampling if freezer is broken
- Get some fish carcasses and practice again (can be done during your trip with the first sets)

SAMPLING INSTRUCTION

BET/YFT/ALB/SKJ:

Otoliths/ gonads/ stomach/ muscle/ liver/ 1st dorsal spine

WAH:

Otoliths/ gonads/ stomach/ muscle/ liver

DOL:

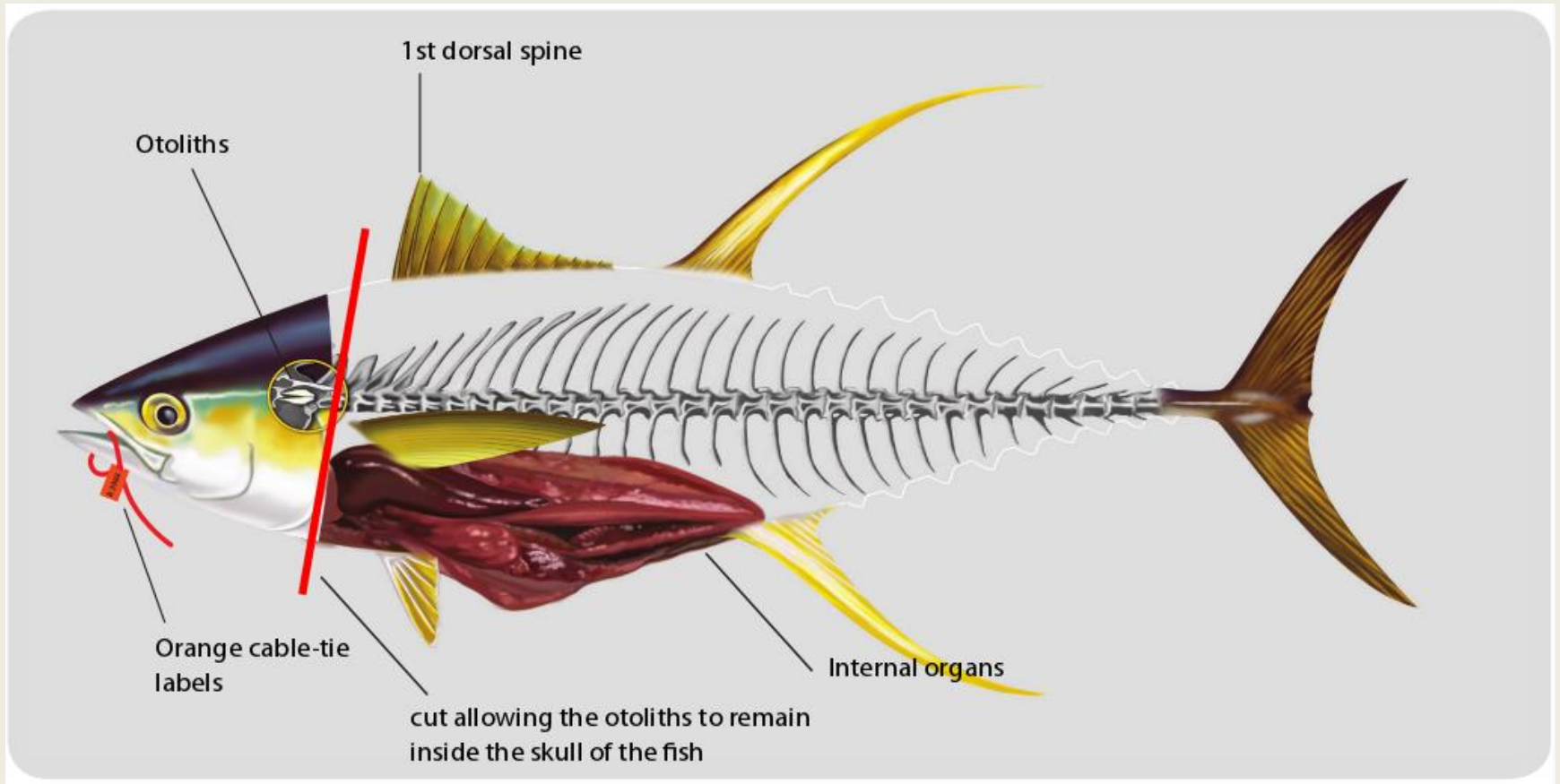
Otoliths (or Head)/ gonads/ stomach/ muscle/ liver

SWO:

Head/ gonads/ stomach/ muscle/ liver / 2nd fin ray

**MLS: Head/ gonads/ stomach/ muscle/ liver / 1st + 2nd + 3rd + 4th dorsal spine
(D1+D2+D3+D4)**

At sea and in port sampling



Checking Data and samples

1 fish = 1 unique number

Each sample placed individually in a plastic bag with a label (excepted dorsal spine) need to read label



Samples match the BS form

No empty fields, 'Y' and 'N' written
If sample not collected or if missing-Comment



Samples are gathered all together and in a freezer (except otoliths in a dry re-sealable bag in a safe place).

Label your bags: **trip ID + desimbarking port**

Labels



Freezer

BEFORE ARRIVAL

Keeping in touch with SPC or your coordinator

- Inform coordinator
fishing vessel 3/4 full
- Send arrival date and port name (regional trip)
- need to coordinate samples collection between you and local fisheries and in port (for species to be sampled in port)

ARRIVAL

Keeping in touch!

- **If you disembark, samples are stored on shore in a freezer.**

Don't leave the samples on the vessel

Get debriefed ! Payment purpose

- **Sampling in port** : Otoliths from Tuna and Whaoo /DOL head
- **End of trip** : return all equipment to Obs. coordinator